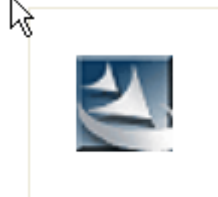


Instructions for Installing and Using the ABCC Examination Orientation Materials

Installing the ABCC Examination Orientation materials:

- Click the hyperlink "Interactive Tutorial with Practice Material".
- Save the file to your Desktop. When the "Download Complete" window appears, hit "Close".
- Go to your Desktop. Double-click the InstallFredABCCF.exe icon.



InstallFredABCCF.exe

Follow the on-screen prompts that will guide you through the installation.

- After the installation is complete, you should see entries on your program menu



and a folder on your desktop for running the tutorial and the practice test materials. If the desktop folder does not appear, click on your desktop area and press the F5 key to refresh your screen, or right-click on your desktop area and select Refresh from the pop-up menu.

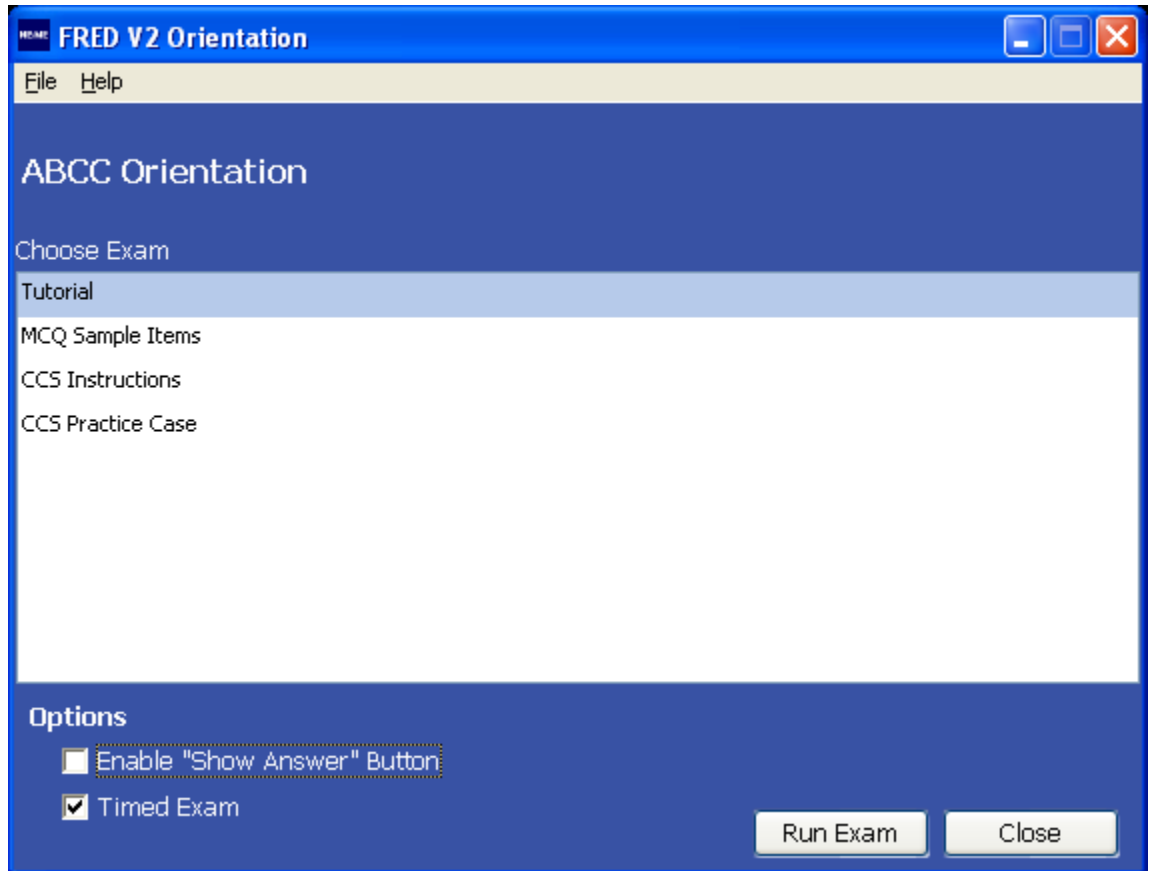
Running the ABCC Examination Orientation Materials

- To view the orientation materials, you must set your screen resolution to 1024 x 768. Please use your manual or system's help if you need assistance changing these settings.
- To view a Power Point slide show describing Primum[®] CCS cases, frequently asked questions, and *Primum* software instructions, double-click on the ABCC Practice Materials folder on your desktop or in your program menu, then double-click on the CCS Tutorial icon.



- To start the software, double-click on the ABCC Practice Materials folder on your desktop or in your program menu, then double-click the  icon.

- The following screen will appear:



- There are four sections to the orientation materials: Tutorial, MCQ Sample Items, CCS Instructions, and CCS Practice Case.

The Tutorial portion will illustrate how the computerized test works and will provide the opportunity to practice before taking the test. If you leave the "Timed Exam" checkbox selected, you will be given 30 minutes to complete the Tutorial. If you would like to review the Tutorial without a time limit, deselect the "Timed Exam" checkbox.

The MCQ Sample Items portion has 23 examples of test questions. Don't worry about whether you answer the questions correctly or not. Concentrate instead on learning how to answer the questions using the features of the computerized test. If you leave the "Timed Exam" checkbox selected, you will be given 30 minutes to complete the MCQ Sample Items. If you would like to take an untimed test, deselect the "Timed Exam" checkbox.

Also, within the MCQ Sample Items, you may select the "Enable 'Show Answer' Button" if you would like the option to have the correct answer displayed as you move from one item to another. It is recommended that you do not enable this feature when answering the questions as a timed test.

The CCS Instructions portion will describe how to start the CCS case within the examination driver. If you leave the "Timed Exam" checkbox selected, you will be given 10 minutes to complete the CCS instructions section. If you would like to review the CCS instructions without a time limit, deselect the "Timed Exam" checkbox.

The CCS Practice Case portion has one CCS case. Experience and practice with the CCS case can have an impact on performance. It is essential that you become familiar with both the software interface and the background information provided. Unlike the other portions of the ABCC practice material, the CCS case can only be run as a timed exam. Whether the "Timed Exam"

checkbox is selected or not, you will be allotted a 25-minute maximum of real time to complete the case but you may not need to use the entire time.

To run each section of the ABCC Orientation Materials, click on the desired section (Tutorial, MCQ Sample Items, CCS Instructions, CCS Practice Case) in the System Launcher window, and click on the Run Exam button.

- When you are finished practicing, you will be returned to the System Launcher window. Click on the Close button to finish your practice session.